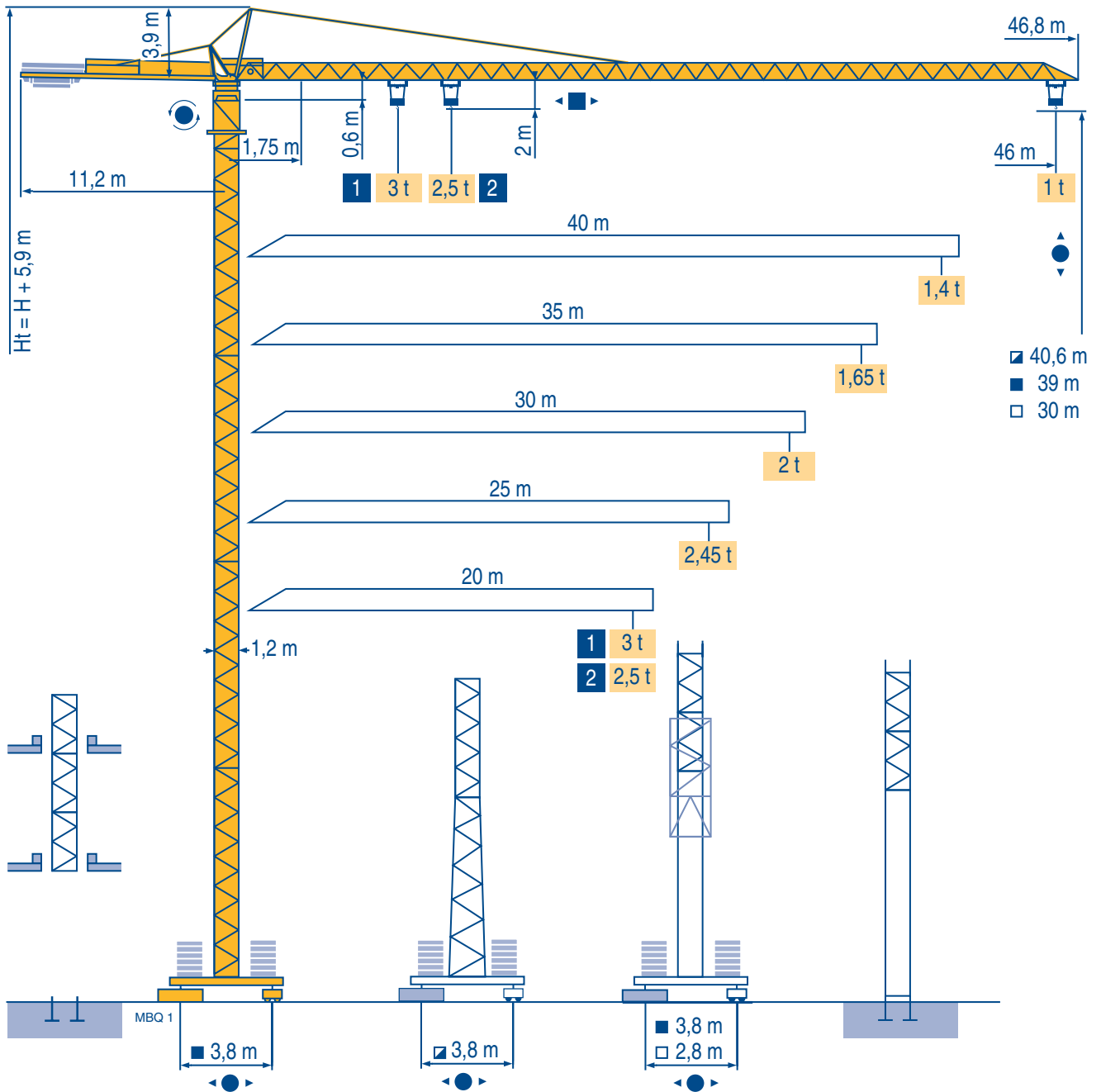


## MC 68 C



# CITY CRANE

CE FEM 1.001-A3

Mat / Réactions  $\square$  1,2 m

Maste /  
Eckdrücke

20 m  $\Rightarrow$  46 m

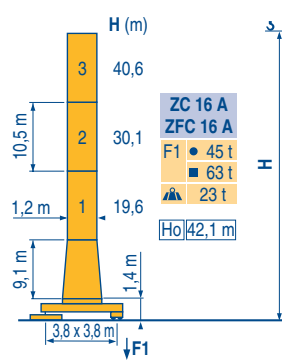
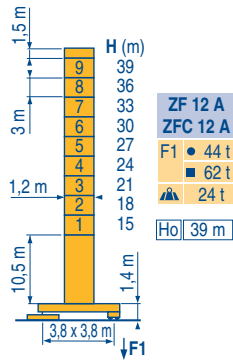
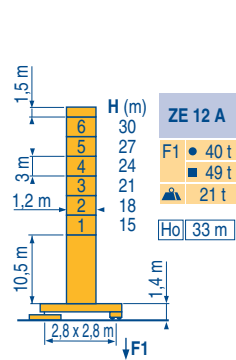
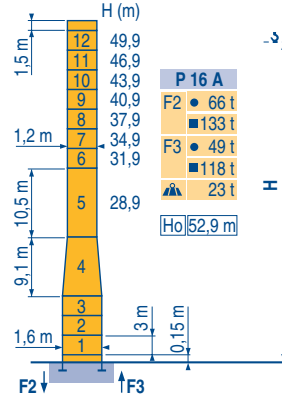
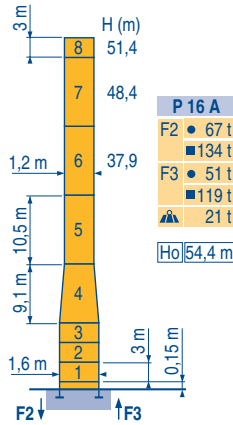
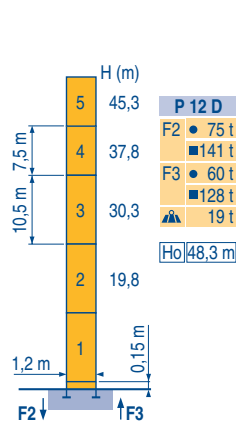
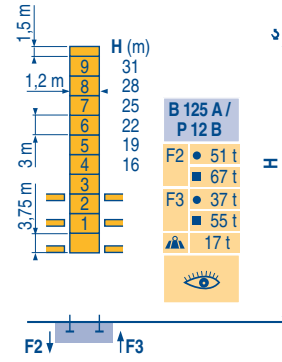
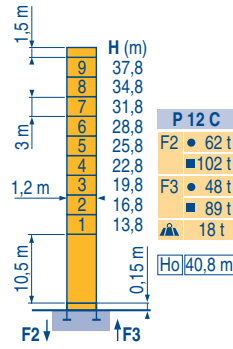
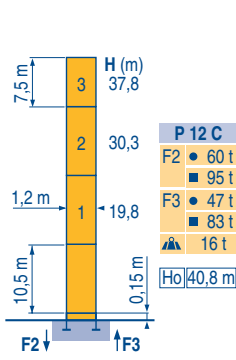
Masts /  
Reactions

Mástil /  
Reacciones

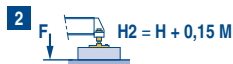
Torre / Reazioni

Tramo /  
Reaçções

MBQ 1



ZE - ZF - ZC - ZFC



CITY CRANE  
MC 68 C

POTAIN

F	D	GB	E	I	P
●	●	●	●	●	●
■	■	■	■	■	■
▲	▲	▲	▲	▲	▲
Reações en service	Reaktionskräfte in Betrieb	Reactions in service	Reacciones en servicio	Reazioni in servizio	Reaçções em serviço
Reações hors service	Reaktionskräfte außer Betrieb	Reactions out of service	Reacciones fuera de servicio	Reazioni fuori servizio	Reaçções fora de serviço
A vide sans lest (ni train de transport) avec flèche et hauteur maximum.	Ohne Last, Ballast (und Transportachse), mit Maximalausleger und Maximalhöhe.	Without load, ballast (or transport axles), with maximum jib and maximum height.	Sin carga, sin lastre, (ni tren de transporte), flecha y altura máxima.	A vuoto, senza zavorra (ne assali di trasporto) con braccio massimo e altezza massima.	Sem carga (nem trem de transporte)- sem lastro com lança e altura máximas.
Ho	H	H	H	H	H
sans cabine	Ohne Fahrerhaus	without cab	sin cabina	senza cabina	sem cabine

**Courbes de charges**

**Lastkurven**

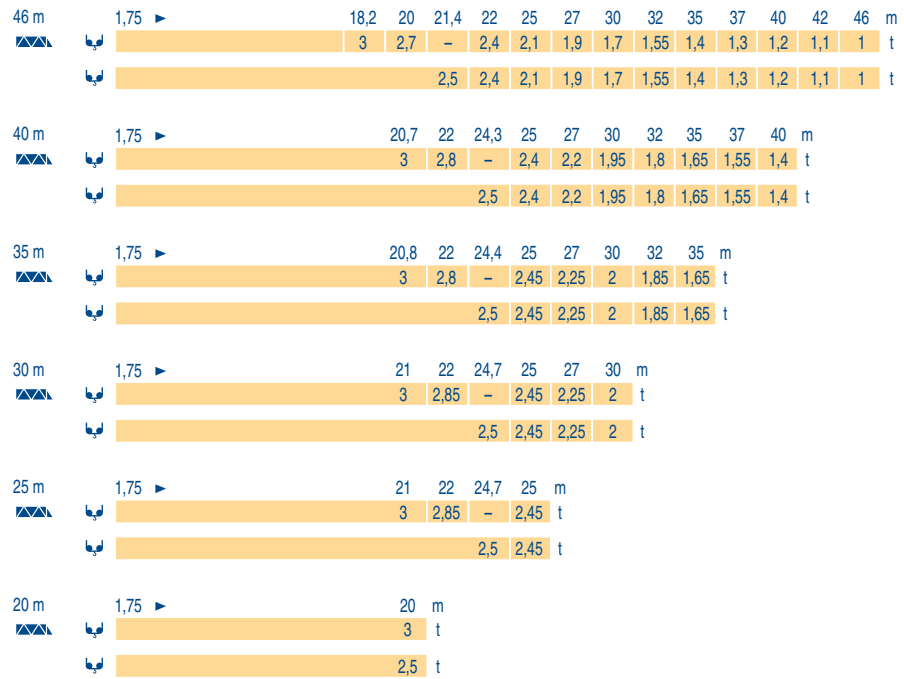
**Load diagrams**

**Curvas de cargas**

**Curve di carico**

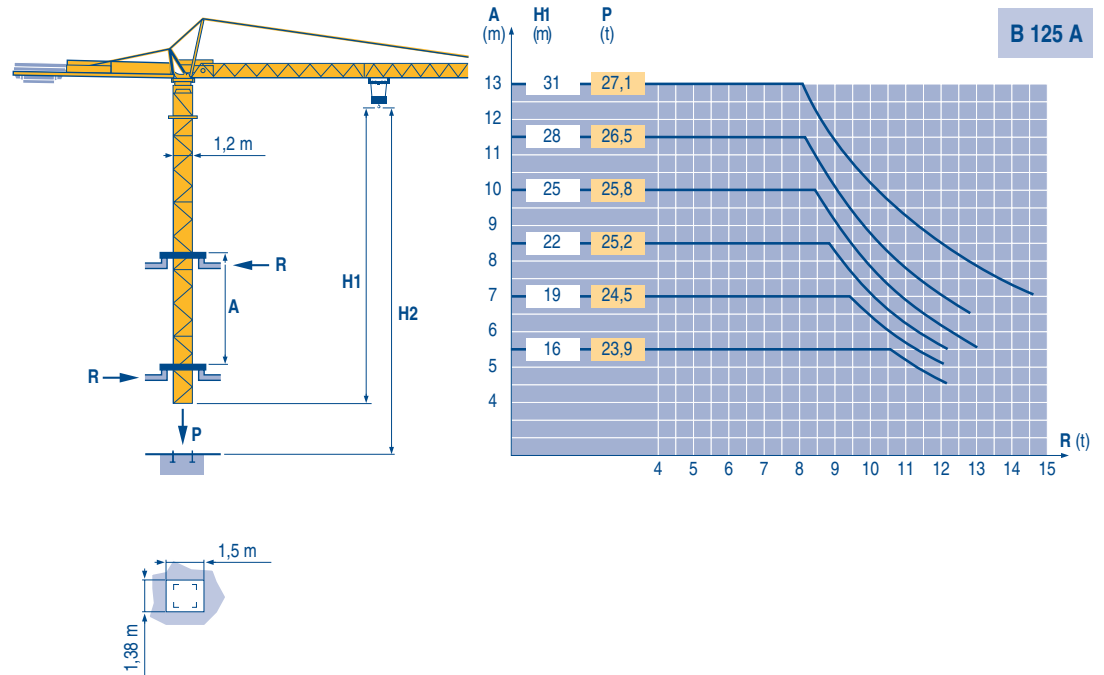
**Curva de cargas**

MBO 2



**Télescopage sur dalles**  
**Kletterkrane im Gebäude**  
**Climbing crane**  
**Telescopage gruas trepadoras**  
**Gru in cavedio**  
**Telescopagem sobre lages**

MBO 1



**CITY CRANE**  
**MC 68 C**



	F	D	GB	E	I	P
<b>A</b>	Distance entre cadres	Abstand zwischen den Rahmen	Distance between collars	Distancia entra marcos	Distanza fra i telai	Distância entre quadros
<b>H1</b>	Hauteur grue	Kranhöhe	Crane height	Altura grúa	Altezza gru	Altura da grua
<b>P</b>	Poids de la grue(en service)	Krangewicht (in Betrieb)	Crane weight (in service)	Peso de la grúa (en servicio)	Peso della gru (in servizio)	Peso da grua (em serviço)
<b>R</b>	Réaction horizontale	Horizontalkräfte	Horizontal reaction	Reaccion horizontal	Reazione orizzontale	Reacção horizontal
	Voir télescopage sur dalles	Siehe Kletterkrane im Gebäude	See climbing crane	Vea grua trepadora	Consultare gru in cavedio	Ver telescopagem sobre lages

Mécanismes  
Antriebe  
Mechanisms  
Mecanismos  
Meccanismi  
Mecanismos

MBQ 2

						ch - PS hp	kW	
	15 PC 13-5	m/min	7,1	21	42	15	11	130 m
		t	2,5	2,5	1,3			
	25 PC 13-7	m/min	7,9	31,5	63	25	18	229 m
		t	2,5	2,5	1,3			
	20 LVF 13	m/min	5 →	31 →	57 →	20	15	230 m
		t	2,5	2,5	1,3			
	15 PC 15	m/min	6	18	36	15	11	130 m
		t	3	3	1,5			
	25 PC 15	m/min	7	27,5	55	25	18	206 m
		t	3	3	1,5			
	3 D2 V5	m/min	21 - 42			3	2,2	
	RCV 40	tr/min U/min rpm	0 → 0,8			6	4,5	
	ZE - ZF 	TVD 324	m/min			2 x 4	2 x 2,9	
	ZC - ZFC 	RT 224	m/min			2 x 4	2 x 2,9	
CEI 38		IEC 38		kVA				
400 V (+6% -10%) 50 Hz		15 PC : 25 kVA 25 PC : 35 kVA 20 LVF : 30 kVA		2000/14				

	F	D	GB	E	I	P	
	Levage	Heben	Hoisting	Elevación	Sollevamento	Elevação	
	Distribution	Katzfahren	Trolleying	Distribución	Distribuzione	Distribuição	
	Orientation	Schwenken	Slewing	Orientación	Rotazione	Rotação	
	Translation	Kranfahren	Travelling	Traslación	Traslazione	Translação	
	Conforme aux directives CEE sur le niveau acoustique		Gemäss EWG-Richtlinien für den Schall-Leistungspegel	In compliance with the EEC Instructions on noise level	Conforme con las directivas CEE sobre el nivel acústico	Conforme alle direttive CEE sul livello acustico	Conforme as directivas CEE sobre o nível acústico

Document commercial non contractuel. Pour toute information technique se référer à la notice correspondante

Unverbindliches Vertriebsdokument. Für technische Informationen, siehe die entsprechenden Anweisungen.

This commercial document is not legally binding. For any technical information, please refer to the corresponding instructions.

Documento comercial no contractual. Para cualquier información técnica, ver la noticia correspondiente.

Documento commerciale non vincolante, per tutte le informazioni tecniche fare riferimento al catalogo istruzioni

Documento comercial não contratual. Para qualquer informação técnica complementar consultar as respectivas instruções



18, rue de Charbonnières - B.P.173  
69132 ECULLY Cedex - France  
Tél. : (33) 4 72 18 20 20  
Fax. : (33) 4 72 18 20 00  
www.manitowoccrane.com www.potain.com



**Americas**  
Tel: +1 920 683 6322  
Tel: +1 717 597 8121

**Europe - Middle East - Africa**  
Tel : +(33) 4 72 81 50 00  
Tel : +(44) 191 565 6281

**Asia - Pacific**  
Tel: +(65) 6861 7133  
Fax: +(65) 6862 4142

www.manitowoccrane.com

**CITY CRANE MC 68 C**  
Réf. 2004 42 MBQ 3  
Copyright.Reproduction interdite © POTAIN 2004

Réalisation Sedoc